



# YACHT PORTFOLIO SOUTHEAST ASIA



# YACHT PORTFOLIO THAILAND

**Our Preferred Yachts**

**Page 3**

**Our Destinations**

**Page 17**





# Sunbird 80

Refitted in 2018, Sunbird 80 is a modern private charter that spans an impressive 80 feet, delivering plenty of space for up to 30 daytime passengers or six overnight guests. Ideal for short or extended journeys, the Sunbird is a stately floating home with three comfortable cabins and extensive sun protected decks. Complete with an array of water toys including water skis, floating beds and a two-seater inflatable donut, Sunbird 80 offers scenic cruising across paradise waters in Phang Nga Bay and the Andaman Sea. The indoor salon is furnished with plush seating and polished woods while the spacious deck is ideal for al fresco dining and the flybridge offers peaceful sea vibes and views.

Fast Facts	
Private charters	Day trips and multi-night journeys
Length	24.38 meters / 80 feet
Cabins and facilities	3 bedrooms, 3 bathrooms (1 master, 1 VIP, 1 bunk)
Passenger capacity	Day: 30 / Night: 6
Number of crew	5
Cruising speed (knots)	16
Cruising locations	Phuket, Phang Nga Bay, Krabi
Home base	Phuket, Thailand





Open-air dining deck



Mastersuite



Salon

Services and Amenities



Snorkeling



Water skis



Barbecue



Kayak



Paddleboard



Exterior view





# Riva 70

Available for day and overnight charters, Riva 70 offers bespoke cruising adventures in the waters of Phuket, Phang Nga Bay and the islands of the Andaman Sea. The three-cabin yacht accommodates up to 12 passengers during the day or six guests overnight and comes with comfortable seating on the flybridge for laid-back days watching southern Thailand’s dreamy seascapes pass by. A platform for swimming or snorkeling is located on the aft and the exterior dining area creates a relaxed setting for al fresco meals. The main cabin is furnished with double bed, small sofa, dressing room and en-suite bathroom while the two other cabins are furnished with two single beds.

Fast Facts	
Private charters	Day trips and multi-night journeys
Length	21.34 meters / 70 feet
Cabins and facilities	3 bedrooms, 3 bathrooms (1 master, 2 twin)
Passenger capacity	Day: 12 / Night: 6
Number of crew	3
Cruising speed (knots)	18+
Cruising locations	Phuket, Phang Nga Bay, Krabi
Home base	Phuket, Thailand





Master suite



Salon

Services and Amenities



Snorkeling



Kayak



Paddleboard



Barbecue

Aft view



Cockpit and galley





# Princess S65

A stylish motor yacht with exceptional space, Princess S65 delivers sophisticated on-board facilities for comfortable, laid-back cruises in Thailand's Andaman Sea. With U-shaped seating in the cockpit and a beautifully styled salon with large wrap-around windows, the yacht is capable of seating up to 16 guests during the day and six guests for overnight charters. The en suite cabins are located on the lower deck while the aft is equipped with a large bathing platform which can be lowered for easy launch and recovery of a tender. An open-plan dining area opposite the galley can be converted into an al fresco bar which connects with electric windows that fully open into the cockpit.

Fast Facts	
Private charters	Day trips and multi-night journeys
Length	19.81 meters / 65 feet
Cabins and facilities	3 bedrooms, 3 bathrooms (1 master / 1 VIP / 1 twin)
Passenger capacity	Day: 16 / Night: 6
Number of crew	3
Cruising speed (knots)	20
Cruising locations	Phuket, Phang Nga Bay, Krabi
Home base	Phuket, Thailand





Exterior view

Services and Amenities



Snorkeling



Barbecue



Master suite



Salon



Cockpit and galley





# Mayavee Princess 60

A 60-foot motor yacht crafted by the renowned English makers of Princess Yachts, Mayavee Princess 60 is ideal for island hopping voyages in Phuket’s picturesque bays, coves and islets. Capable of seating up to 16 passengers during the day and six passengers overnight, the spacious lifestyle cruiser presents the perfect marine playground with a bar and scenic views from the flybridge, lounge seating on the main deck as well as a barbecue, sofa, sun pads and a dining table. Handling all types of sea conditions with ease, the yacht combines comfortable cruising abilities with exceptional sea keeping and comes complete with water skis, snorkeling gear and fishing equipment available for use on board.

Fast Facts	
Private charters	Day trips and multi-night journeys
Length	18.29 meters / 60 feet
Cabins and facilities	3 bedrooms, 2 bathrooms (1 master, 1 VIP, 1 twin)
Passenger capacity	Day: 16 / Night: 6
Number of crew	3
Cruising speed (knots)	20
Cruising locations	Phuket, Phang Nga Bay, Krabi
Home base	Phuket, Thailand





Flybridge

Services and Amenities



Snorkeling



Paddleboard



Barbecue



Master suite



Salon



Aft seating





# Atlantis 50

Spanning 15.24 meters (50 feet), Atlantis 50 is a contemporary motor yacht that offers comfortable cruising at speeds up to 20 knots. With a hard-top and semi-enclosed saloon, the day cruiser seats up to 10 guests and comes with a dedicated three-person crew. Complete with on-board equipment such as a standup paddleboard and snorkeling gear, this modern and efficient vessel is the ideal way to travel amid the islands, beaches and natural wonders of Phuket and Phang Nga Bay.

Fast Facts	
Private charters	Day trips
Length	15.24 meters / 50 feet
Cabins and facilities	Shower and toilet
Passenger capacity	Day: 10 / Night: 0
Number of crew	3
Cruising speed (knots)	20
Cruising locations	Phuket, Phang Nga Bay, Krabi
Home base	Phuket, Thailand





External view

Services and Amenities



Snorkeling



Paddleboard



Aft view



Bow seating



Overview





# Uncle Joss 42

A stylish motor yacht, Uncle Joss 42 delivers a memorable cruising experience with comfortable, well-appointed interiors. Refurbished in 2019, the 12.8-meter (42 foot) vessel is capable of seating up to 12 guests during the day and comes complete with two cabins for overnight charters. With a cruising speed of up to 20 knots and a dedicated three-person crew, the yacht is the ideal choice for an exciting day out in Phang Nga Bay, where your options include exploring the Phi Phi Islands, Krabi or nearby islands such as Racha or Maithon Island.

Fast Facts	
Private charters	Day trips and multi-night journeys
Length	12.8 meters / 42 feet
Cabins and facilities	2 bedrooms, 2 bathrooms (1 double / 1 twin)
Passenger capacity	Day: 12 / Night: 4
Number of crew	3
Cruising speed (knots)	20
Cruising locations	Phuket, Phang Nga Bay, Krabi
Home base	Phuket, Thailand





Overview

Services and Amenities



Snorkeling



Paddleboard



Master cabin



Bow seating



Salon





# Bluefin 34

An ideal choice for comfortable day charters in Phang Nga Bay, Bluefin 34 offers the perfect combination of power and grace. The 10.36-meter (34-foot) motor yacht features Italian design and delivers a comfortable cruising experience for up to six passengers. Cruising up to 27 knots, the boat was newly refitted in 2021 and comes with an on-board cabin and bathroom for comfort and convenience. The spacious lounge area at the bow is a great place for soaking up the sun while explore the region’s tropical scenery, islands and beaches.

Fast Facts	
Private charters	Day trips
Length	10.36 meters / 34 feet
Cabins and facilities	Shower and toilet
Passenger capacity	Day: 6 / Night: 0
Number of crew	2
Cruising speed (knots)	27
Cruising locations	Phuket, Phang Nga Bay, Krabi
Home base	Phuket, Thailand





External view

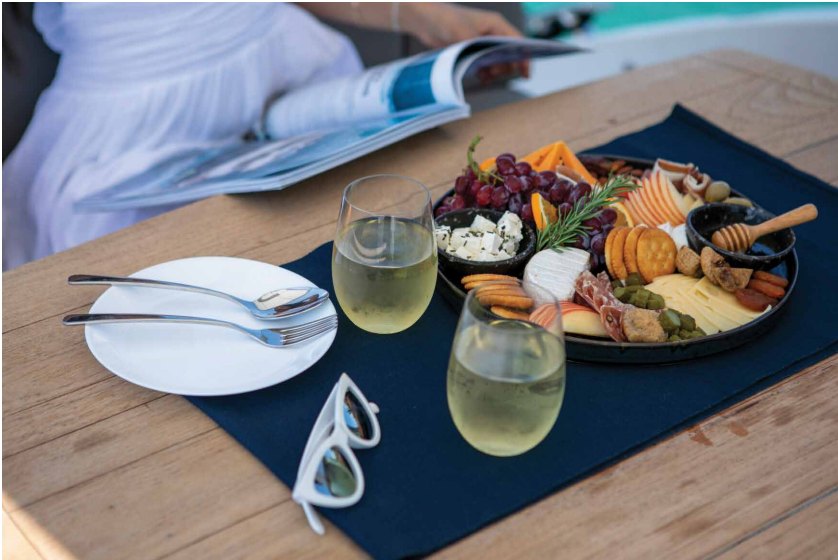
Services and Amenities



Snorkeling



Bow seating



On board services



Exterior



## Design Your Perfect Yacht Journey

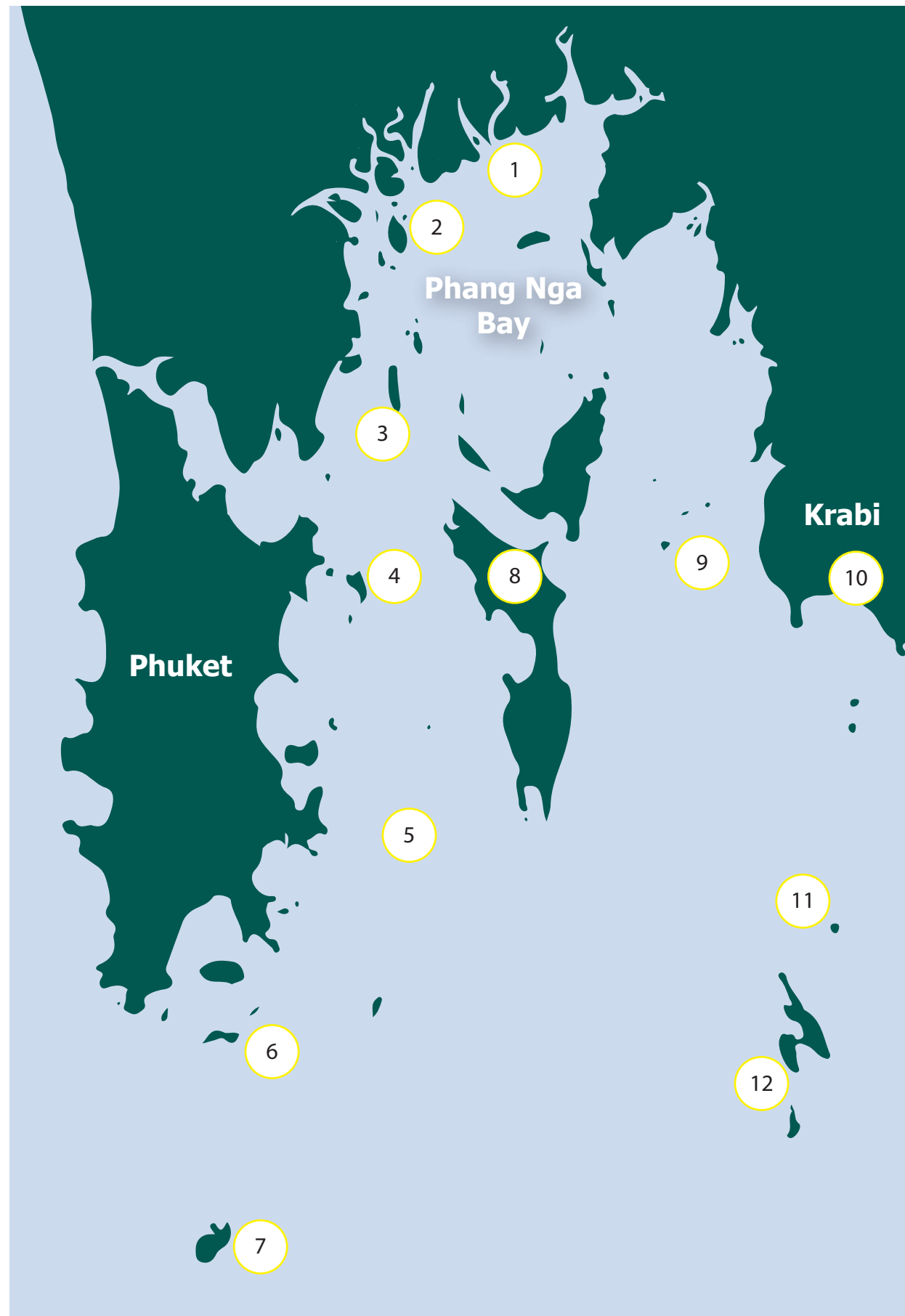
Sail across the Andaman Sea to discover picturesque islands, caves and limestone pinnacles in Phang Nga Bay and beyond. Available for day cruises or overnight charters, our private yacht journeys are fully customizable with options for swimming, snorkeling, kayaking, beach picnics and scenic cruising according to your interests.



**Akorn**  
Akorn DESTINATION MANAGEMENT



# DESTINATIONS PHUKET & PHANG NGA BAY



**1. Panyí Village**  
A floating fishing community with shops, a mosque and a football field built on water.



**2. James Bond Island**  
The limestone pinnacle that featured in the 1974 film *The Man with the Golden Gun*.



**3. Phanak Island**  
An island of limestone cliffs, caves and lagoons that can be explored by kayak.



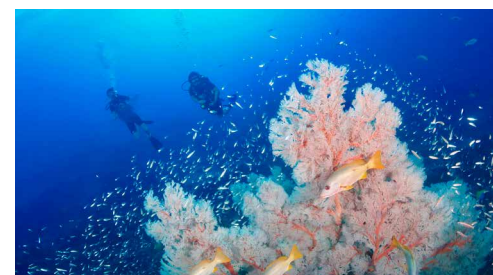
**4. Naka Island**  
A scenic spot for snorkeling and swimming amid the bay's karst scenery and soft sands.



**5. Khai Islands**  
Three small islands with crystal waters, unique rock formations and colorful coral.



**6. Coral Island (Koh Hae)**  
Soft sand beaches, ideal for watersports and snorkeling in impressive coral reefs.



**7. Racha Island**  
Popular for diving and snorkeling, the island features fine white sands in a U-shaped bay.



**8. Koh Yao Yai & Koh Yao Noi**  
Two islands famous for white beaches and coral reefs for swimming or snorkeling.



**9. Hong Island Krabi**  
A lagoon hidden in a wall of limestone cliffs, ideal for kayaking, snorkeling and swimming.



**10. Railay Beach, Krabi**  
A small beach with scenic sunsets and caves and cliffs for rock climbing enthusiasts.



**11. Bamboo Island**  
Soft white sands and beautiful underwater coral gardens, ideal for snorkeling.



**12. Phi Phi Islands**  
Snorkeling, island shops and scenic bays, from Maya Bay to Monkey Beach.



# DESTINATIONS BEYOND PHUKET



**1. Surin Islands**  
Five islands with coral gardens and a sea gypsy village, ideal for diving and snorkeling.



**2. Similan Islands**  
Some of the world's best diving spots with hard and soft coral around 11 islands.



**3. Koh Haa (Five Islands)**  
A popular dive spot with underwater caverns, lagoons and vibrant marine life.



**4. Koh Ngai**  
An island of evergreen forests, coconut palms, sandy beaches and snorkeling spots.



**5. Koh Muk**  
Tall cliffs with swallow's nests, a village and Emerald Cave, accessible only by boat.



**6. Koh Kradan**  
Rubber and coconut plantations framed by white sand beaches and coral reefs.



**7. Koh Rok**  
A quiet island for snorkeling, diving or walking on the white sand beach.



**8. Koh Adang**  
Several dive spots with an abundance of coral and fish near the Malaysian border.



**9. Koh Lipe**  
An L-shaped island surrounded by clear waters and coral for diving and snorkeling.



# OVER 30 YEARS OF LUXURY TRAVEL EXPERTISE IN SOUTHEAST ASIA

---

## Contact Us

**Thailand, Vietnam, Cambodia,  
Laos, Indonesia, Myanmar**

[southeastasia@akorndmc.com](mailto:southeastasia@akorndmc.com)

---



[akorndmc.com](http://akorndmc.com)

