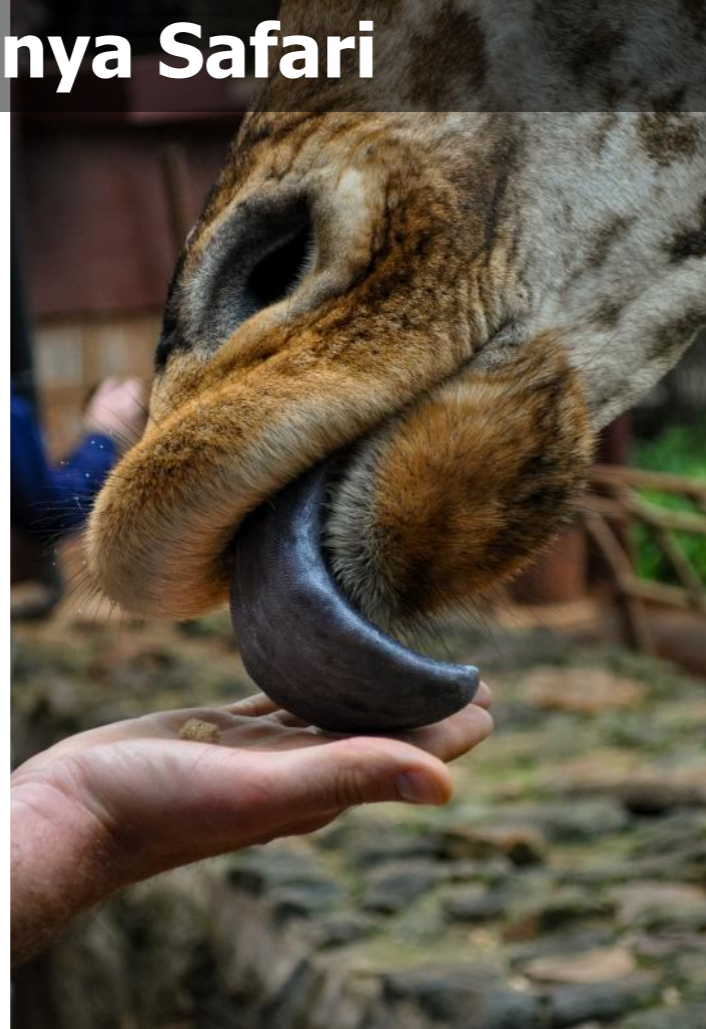
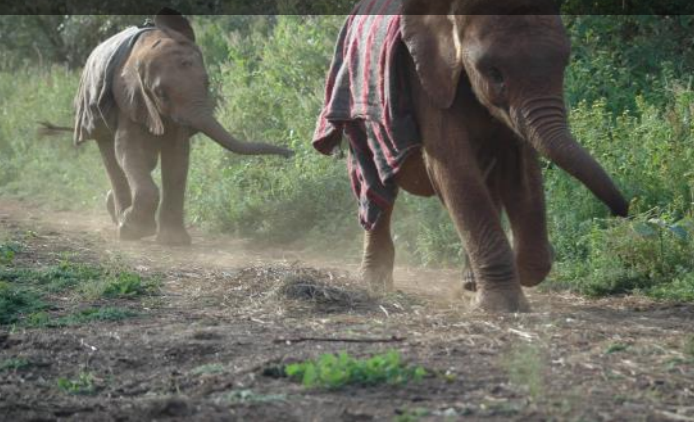


Family Kenya Safari



ITINERARY

1 Arrive in Nairobi

Arrive at Jomo Kenyatta International Airport, clear immigration procedures, meet your guardian angel who transfers you to your Nairobi hotel.

Overnight: Bronze: Emara Ole Sereni | Silver: House of Waine | Gold: Hemingways Nairobi

Meal Plan:

2 Nairobi

Today, explore Nairobi. Feed the giraffes at the Giraffe Centre, thereafter enjoy a visit with the elephants at the David Sheldrick Elephant Orphanage followed by a trip into the forest to experience our exclusive Insider Access Activity: Forest Folk Stories with lunch.

Take a short walk beneath the canopy of the Oloolua Forest – a dry tropical forest that once would have covered most of this part of Nairobi. As you near the clearing you will hear drums in the distance and a traditional song of welcome calls you in. From the shadows your storyteller appears, their stories seem to weave a spell around you which intermingles with the sounds of the forest. They will pull you into the magic of the tales that have been handed down from generation to generation; stories of great warriors and tricky tortoises that will leave you captivated. Your lunch is a miniature picnic feast and each bite size delicacy is not only delicious but easy to eat in this beautiful forest setting.

Overnight: Bronze: Emara Ole Sereni | Silver: House of Waine | Gold: Hemingways Nairobi

Meal Plan: B,L,D

3 Ol Pejeta Conservancy

After an early breakfast drive to Ol Pejeta Conservancy in the shadow of Mount Kenya. The conservancy is famous for its rhino conservation program and boasts the largest Black rhino sanctuary in East Africa.

Ol Pejeta has magnificent views across its plains to the peaks of Mount Kenya; a variety of herbivores are found within the reserve and the big cats may also be seen. Orphaned rhino and warthog (one of which was the model for Pumba, from the movie Lion King), which have been reared by hand, provide a wonderful treat for children, as does the chimpanzee sanctuary.

Overnight: Bronze: Sweetwaters Serena | Silver: Akorn Exclusive Tented Camp | Gold: Sanctuary Tambarare

Meal Plan: B,L,D

4 Ol Pejeta Conservancy

Today is special as you get to meet Najin and Suni, the last two remaining Northern White rhinos in the planet.

In 2009 Ol Pejeta Conservancy welcomed Najin and Suni, the world's last remaining Northern White rhinos, from the Dvůr Králové Zoo in the Czech Republic. They now live in the 700-acre Endangered Species Enclosure and you have an opportunity to meet them up close and hear their amazing stories. Their keeper will also tell you about the incredible efforts being made to save the species from extinction which includes the first rhino artificial insemination using their frozen eggs.

Overnight: Bronze: Sweetwaters Serena | Silver: Akorn Exclusive Tented Camp | Gold: Sanctuary Tambarare

Meal Plan: B,L,D





5 Ol Pejeta Conservancy

The Conservancy is protected by a large team of rangers who patrol the sprawling land with the help of well trained and loved dogs.

Ol Pejeta’s canine unit plays an important role in the conservancy’s anti-poaching efforts and often proves to be one of the best lines of defense. Learn all about the dogs from their keepers, tour their kennels and then play an exciting game of hide and seek with the canines – you hide, they seek! Not only are the games great fun but they also help train the dogs.

Overnight: Bronze: Sweetwaters Serena | Silver: Akorn Exclusive Tented Camp | Gold: Sanctuary Tambarare
Meal Plan: B,L,D

6 Ol Pejeta Conservancy

After breakfast get your walking shoes on and head out on a community walk of the area. Ol Pejeta Conservancy works closely with surrounding communities in a variety of enterprises from health, education, agriculture and business, among others. Visit Ol Pejeta’s neighbors and learn about the conservancy’s initiatives first hand from the farmers, businesswomen and even the children during the school holidays.

Overnight: Bronze: Sweetwaters Serena | Silver: Akorn Exclusive Tented Camp | Gold: Sanctuary Tambarare
Meal Plan: B,L,D

7 Masai Mara National Reserve

This morning, transfer to the airstrip for your morning flight to the Masai Mara . Arrive in time for lunch and an afternoon game drive.

The jewel in Africa's crown, Masai Mara is host to the most spectacular array of wildlife. Its 1,510 square kilometres (583 square miles) of open savannah, woodlands and tree-lined rivers create an ecosystem that supports huge numbers of bird and mammal species. Lion are found in abundance throughout the park as are elephant, giraffe, a variety of gazelle species and zebra. Cheetah and leopard are also regularly seen and, if lucky, you may also find rhino.

Overnight: Bronze: Ashnil Mara | Silver: Karen Blixen Camp | Gold: Sanctuary Olonana
Meal Plan: B,L,D

8 & 9 Masai Mara National Reserve

Spend the next two days exploring the beauty of the Masai Mara with game drives, nature walks plus fun kid activities including how to shoot a bow and arrow, track animals, bake and make necklaces. Child minders, trackers and cooks are available to ensure the children have new and exciting daily adventures.

Overnight: Bronze: Ashnil Mara | Silver: Karen Blixen Camp | Gold: Sanctuary Olonana
Meal Plan: B

10 Depart Nairobi

Today, fly back to Wilson Airport, Nairobi. You are met on arrival by a guardian angel and transferred to your day room to freshen up before the flight home.

Meal Plan: B



Akorn
AKORN DESTINATION MANAGEMENT



OVERVIEW

2 NIGHTS - NAIROBI
4 NIGHTS - OL PEJETA CONSERVANCY
3 NIGHTS - MASAI MARA NATIONAL RESERVE

INCLUDES

- Accommodation
- Meals & drinks as indicated
- Game drives in all parks and a nature walk in Lewa.
- Internal flights (maximum 15kg/33lb luggage allowance)
- Meet and assist
- Kids activities at the camps and lodges

EXCLUDES

- Meals & drinks not specified
- Premium drinks including champagnes, cognacs, fine wines, premium brand spirits, cigars
- Touring and excursions not specified
- All items of personal nature, telephone calls, curio shop purchases
- Gratuities
- International flights & visas

PLEASE NOTE

- Rates are valid for 2024 (subject to change)
- Rates are based on per person and children under 12 sharing a room with their parents
- Transfers and guiding with an English speaking driver/guide unless other languages are requested
- Season rates are subject to camp/lodge/hotels
- Should any of the suggested properties not be available, a similar property will be quoted
- Contact your consultant for a quotation based on guest's travel dates

